

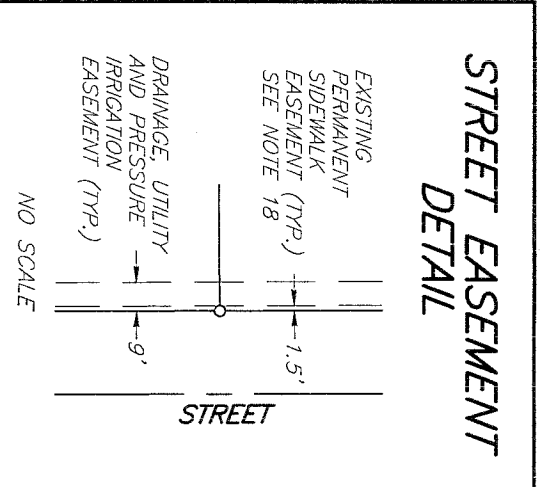
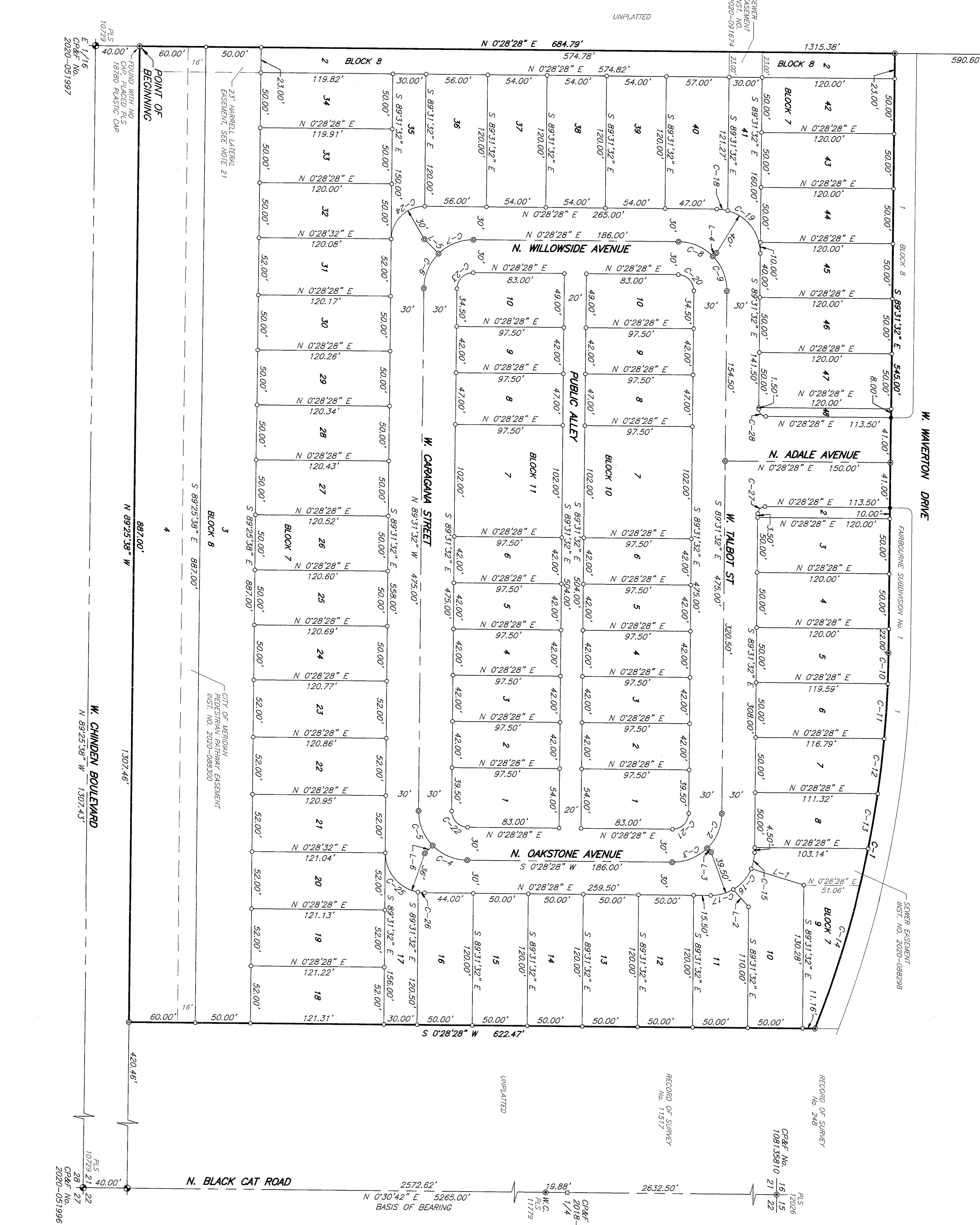
FAIRBOURNE SUBDIVISION NO. 2

BEING A PORTION OF THE SE 1/4 OF THE SE 1/4 OF SECTION 21,
TOWNSHIP 4 NORTH, RANGE 1 WEST, BOISE MERIDIAN, CITY OF MERIDIAN, ADA COUNTY, IDAHO

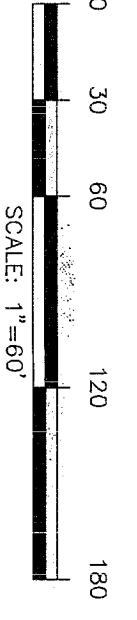
FAIRBOURNE DEVELOPMENT, LLC.
2020

PLS 5082
SE 1/16
CR&F No.
2018-079418

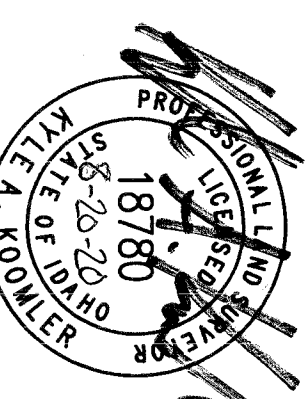
BK 14 P 18216



SEE SHEET 2 FOR
CURVE DATA, LINE DATA
AND PLAT NOTES



- LEGEND**
- SUBDIVISION BOUNDARY
 - SET 5/8"x24" IRON PIN WITH PLS 18780 PLASTIC CAP
 - FOUND 5/8" IRON PIN WITH PLS 18780 PLASTIC CAP OR AS NOTED
 - FOUND 1/2" IRON PIN WITH PLS 18780 PLASTIC CAP OR AS NOTED
 - FOUND ALUMINUM CAP MOVEMENT
 - FOUND BRASS CAP MOVEMENT
 - SET 1/2"x24" IRON PIN WITH PLS 18780 PLASTIC CAP
 - CALCULATED POINT, NOTHING SET
 - WITNESS CORNER
 - SECTION LINE
 - STREET CENTERLINE
 - LOT LINE
 - EXISTING LOT LINE
 - EASEMENT LINE



CIVIL SURVEY CONSULTANTS, INC.
2893 SOUTH MERIDIAN ROAD
MERIDIAN, IDAHO 83642
(208) 888-4312